



LS-6742P  
DA40000VY10

# Compal Confidential

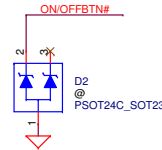
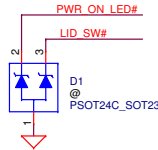
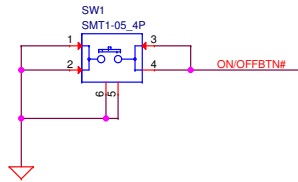
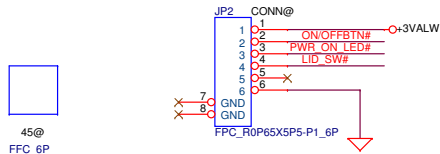
## Brazos PCM10 LS6742 Schematics Document

PWR BTN

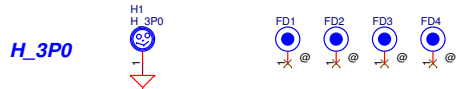
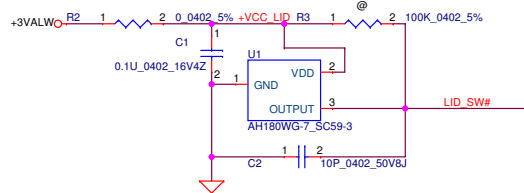
2010-11-29

REV:1.0

Security Classification	Compal Secret Data			Compal Electronics,Ltd.	
Issued Date	2010/05/06	Deciphered Date		Title	Cover Sheet
THIS SHEET OF ENGINEERING DRAWING IS THE PROPRIETARY PROPERTY OF COMPAL ELECTRONICS, INC. AND CONTAINS CONFIDENTIAL AND TRADE SECRET INFORMATION. THIS SHEET MAY NOT BE TRANSFERRED FROM THE CUSTODY OF THE COMPETENT DIVISION OF R&D DEPARTMENT EXCEPT AS AUTHORIZED BY COMPAL ELECTRONICS, INC. NEITHER THIS SHEET NOR THE INFORMATION IT CONTAINS MAY BE USED BY OR DISCLOSED TO ANY THIRD PARTY WITHOUT PRIOR WRITTEN CONSENT OF COMPAL ELECTRONICS, INC.				Rev Custom	Rev 0.1
				Date: Monday, November 29, 2010	Sheet 1 of 2



LID SWITCH



Security Classification		Compal Secret Data		Compal Electronics, Inc.	
Issued Date	2009/05/06	Deciphered Date		Title	
THIS SHEET OF ENGINEERING DRAWING IS THE PROPRIETARY PROPERTY OF COMPAL ELECTRONICS, INC. AND CONTAINS CONFIDENTIAL AND TRADE SECRET INFORMATION. THIS SHEET MAY NOT BE TRANSFERRED FROM THE CUSTODY OF THE COMPETENT DIVISION OF R&D DEPARTMENT EXCEPT AS AUTHORIZED BY COMPAL ELECTRONICS, INC. NEITHER THIS SHEET NOR THE INFORMATION IT CONTAINS MAY BE USED BY OR DISCLOSED TO ANY THIRD PARTY WITHOUT PRIOR WRITTEN CONSENT OF COMPAL ELECTRONICS, INC.				Rev	0.2
				Document Number	PCM10 LS6742 PWR-BTN SCHEMATIC
				Date:	Tuesday, December 07, 2010
				Sheet	2 of 2